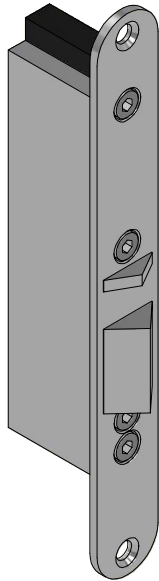


EFF EFF 351U80, 351M80 & 352 M80

FD60/60s

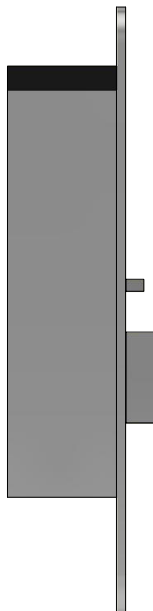
Isometric



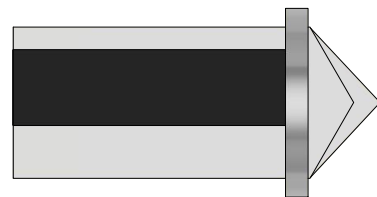
Perspective



Plan



Front



* For Illustrative Purpose Only.



forza-doors.com

01403 711 126

info@forza-doors.com

Specification

Door: Min. 54mm Timber Particle Board
FCS60 & FCH60

Frame: Min. 105x57 Liner at Head

Intumescent: Leaf head must include 2no. 15x4mm
intumescents fitted centrally & spaced
10mm apart

Lock installed in frame head only

Title EFF EFF 351U80, 351M80 & 352 M80

Code FD60/60s

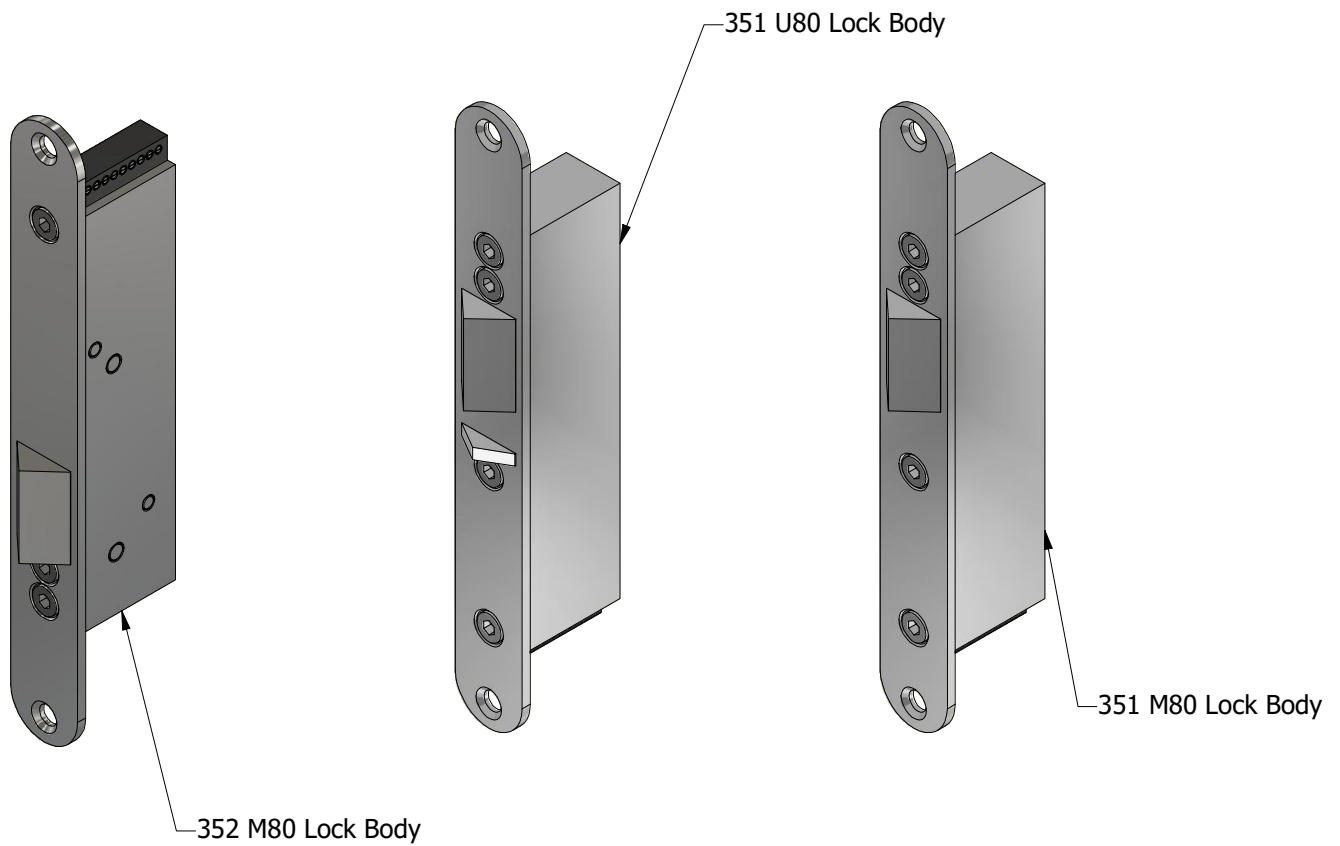
Sheet 1 of 2 Date 06/01/2026

Issue 2 Dwg No FZD5329

EFF EFF 351U80, 351M80 & 352 M80

FD60/60s

Exploded View



* For Illustrative Purpose Only.



forza-doors.com

01403 711 126

info@forza-doors.com

Specification

Door: Min. 54mm Timber Particle Board
FCS60 & FCH60

Frame: Min. 105x57mm Liner at Head

Intumescent: Leaf head must include 2no.15x4mm
intumescents fitted centrally & spaced
10mm apart

Lock installed in frame head only

Title EFF EFF 351U80, 351M80 & 352 M80

Code FD60/60s

Sheet 2 of 2 Date 06/01/2026

Issue 2 Dwg No FZD5329