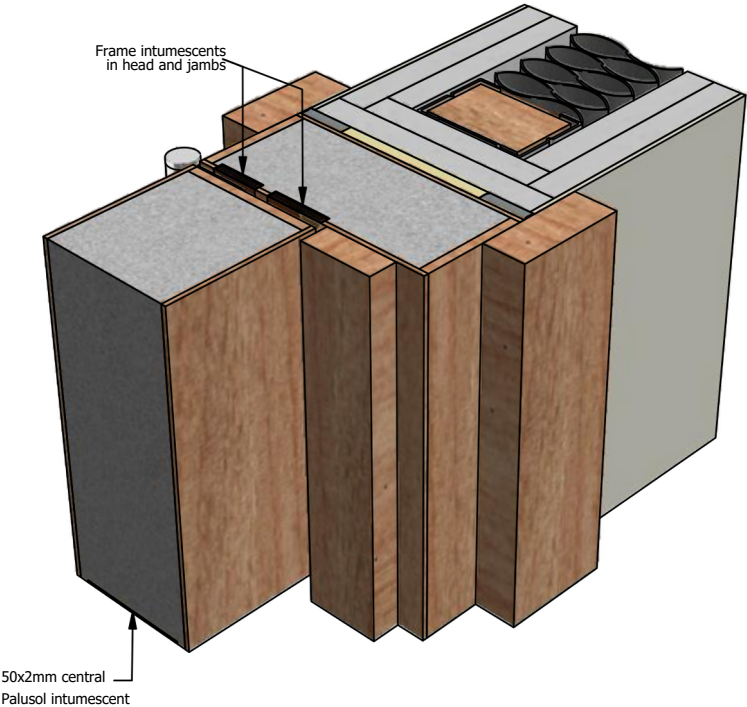


4-Part Composite Doorframe

DFC1044P

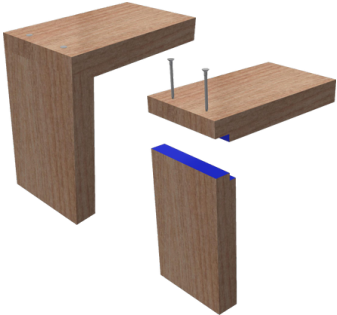
FD120 (FCW)

Isometric



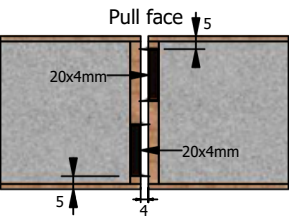
Head / Jamb Joint

- Flat Half-Lap Joint

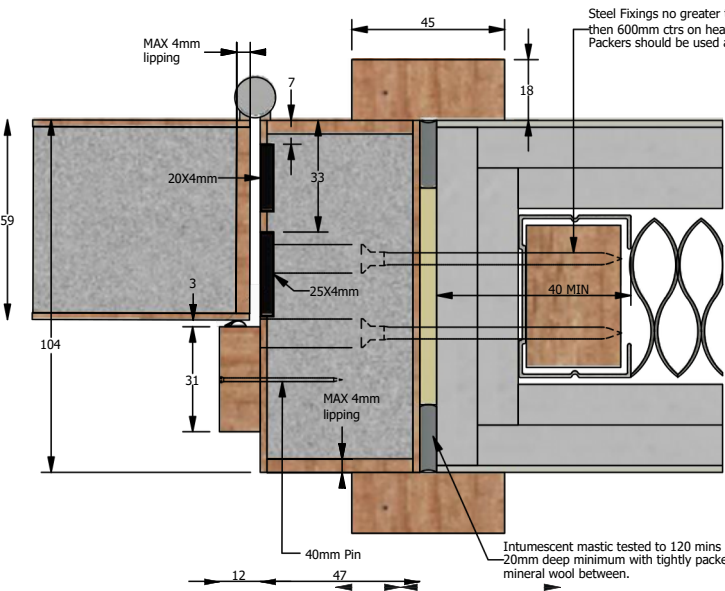


Double Leaf

In-active Leaf Active Leaf



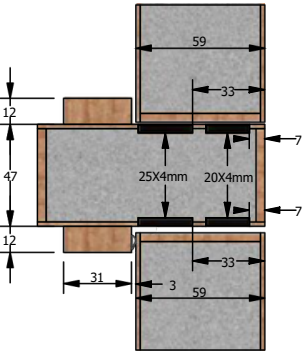
Dimensions (Jambs and Head)



Steel Fixings no greater than 200mm from corners, then 600mm ctrs on head and stiles. Packers should be used at all fixing positions.

Over-panel Transom

Maximum 1000mm height



Transom to be side fixed through Stiles



forza-doors.com
01403 711 126
info@forza-doors.com

| | |
|---------|----------------------------|
| TITLE | 4-Part Composite Doorframe |
| CODE | DFC1044P FD120 (FCW) |
| SHEET | 1 of 1 |
| DATE | 16/02/2024 |
| ISSUE | 4 |
| DWG No. | FZD0477 |

| | |
|-----------------|--|
| DOOR | FCW120 |
| LINER | FCW120, Max. 4mm solid timber edge lippings |
| STOP/ARCHITRAVE | Solid Timber |
| FINISH | Precatalyst Lacquer |
| LIPPING | Solid Timber - Finish max. 3mm edge lippings |
| SEALS | 25x4mm, 20x4mm, 50x2mm, ST1009 |