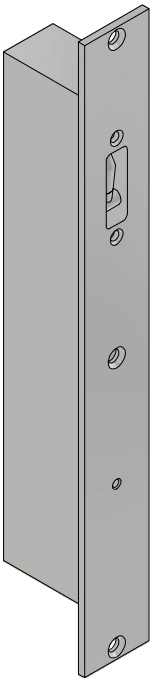


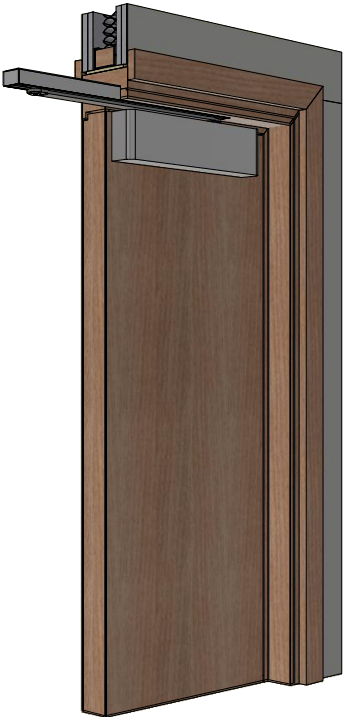
Assa Abloy Trimec ES8100_V-Lock

FD60/FD60s

Isometric



Perspective



Plan



Front



*Lock Details For Illustrative Purpose Only.



forza-doors.com
01403 711 126
info@forza-doors.com

Specification

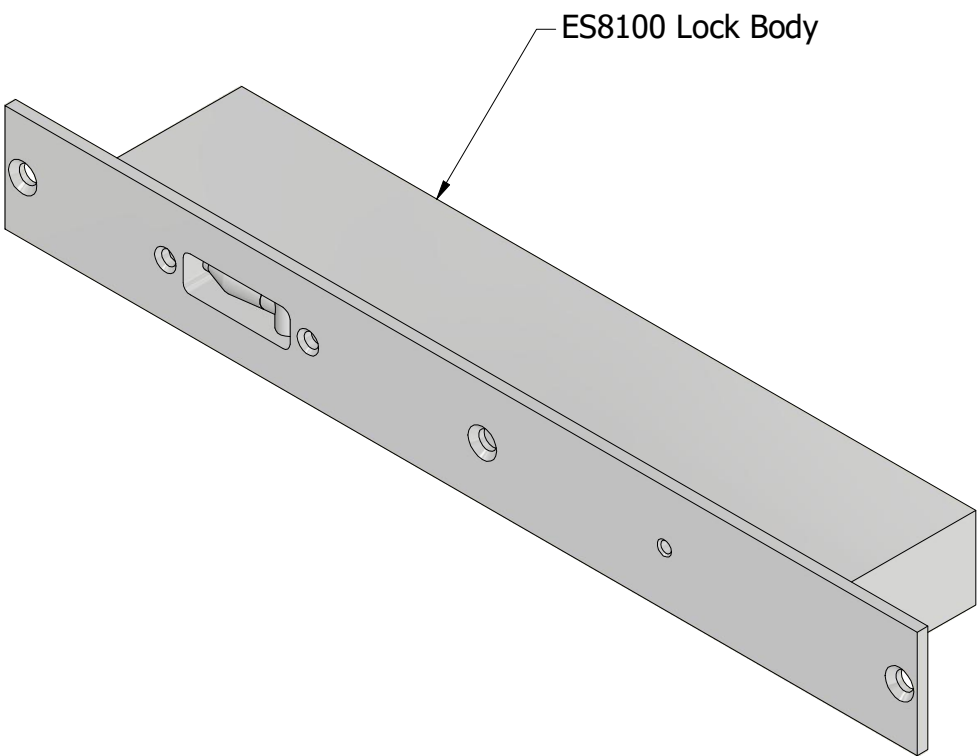
Door: Min. 64mm Timber Particle Board FCH90
Frame: Min. 90x60 Liner at Head
Intumescent: 2mm intumescent encasing lock body and beneath the forend and strike
1No 25x4mm & 1No 20x4mm intumescent seals fitted centrally in the frame head, spaced 6mm apart.
Lock installed in frame head only.

Title Assa Abloy Trimec ES8100_V-Lock
Code FD60/FD60s
Sheet 1of2
Issue 1
Date 01/10/2025
Dwg Nr. FZD5633

Assa Abloy Trimec ES8100_V-Lock

FD60/FD60s

Exploded View



*Lock Details For Illustrative Purpose Only.



forza-doors.com

01403 711 126

info@forza-doors.com

Specification

Door: Min. 64mm Timber Particle Board FCH90
Frame: Min. 90x60 Liner at Head
Intumescent: 2mm intumescent encasing lock body and beneath the forend and strike
1No 25x4mm & 1No 20x4mm intumescent seals fitted centrally in the frame head, spaced 6mm apart.
Lock installed in frame head only.

Title Assa Abloy Trimec ES8100_V-Lock
Code FD60/FD60s
Sheet 2of2
Issue 1
Date 01/10/2025
Dwg Nr. FZD5633