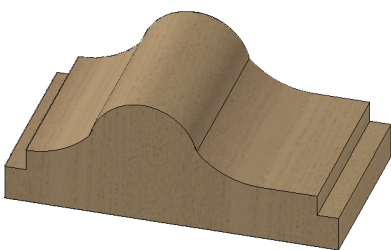
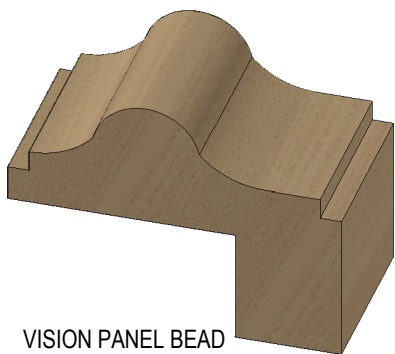


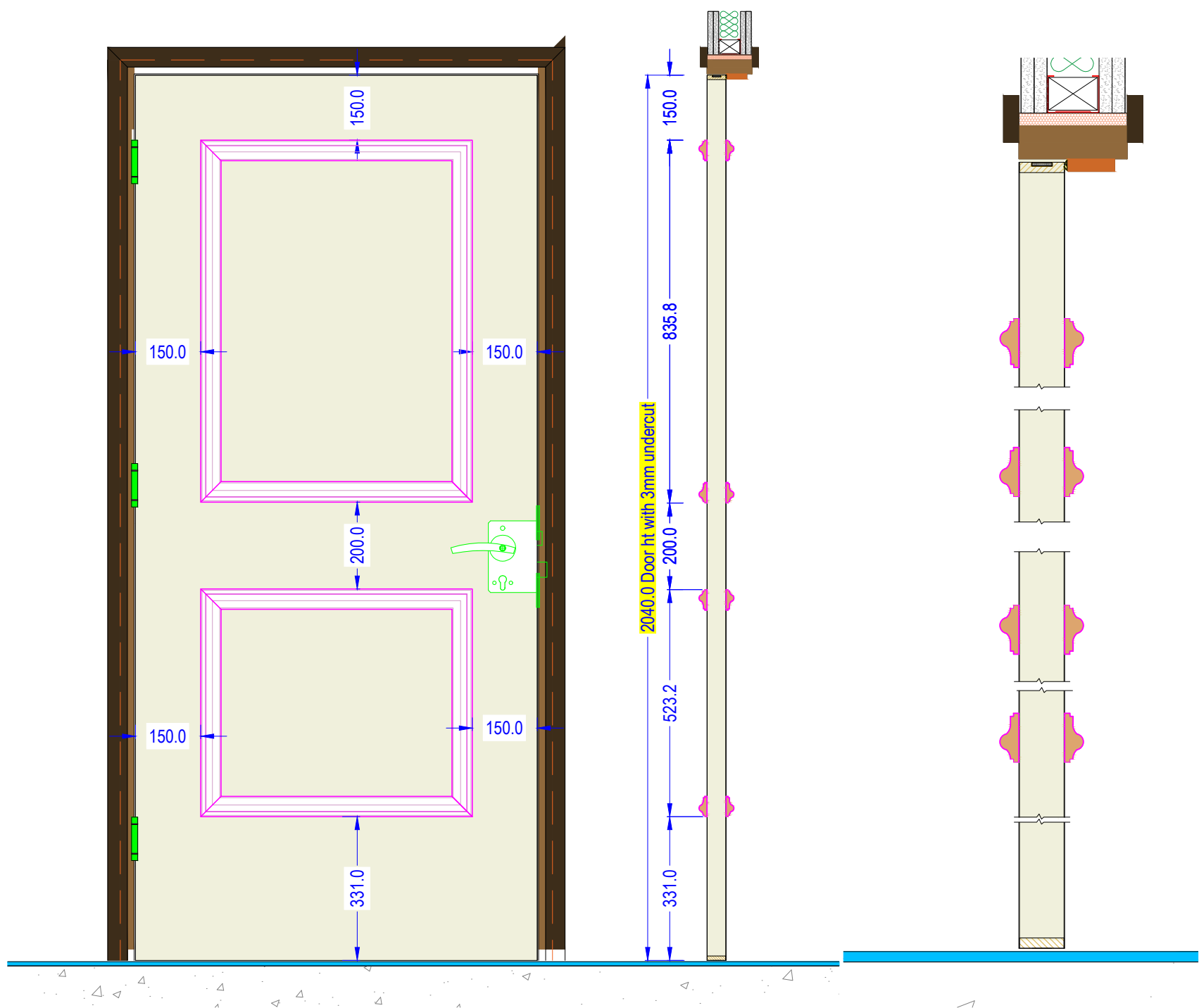
FLUSH BEAD



FLUSH BEAD



VISION PANEL BEAD



NOTE:

For fire rating purposes cut leaf aperture needs to be min. 150mm from door top and side edges.
All dimensions for indicative purposes and subject to change.

Factory Shop
Drawing

Project: Forza
Project Ref: Internal use
Drawn by: GP

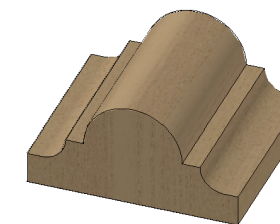
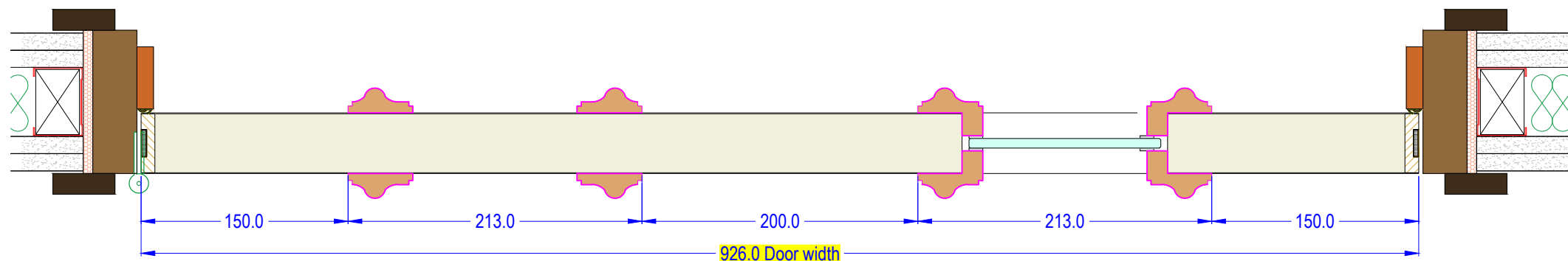
Drawing No: FZI00124
Revision No: 0
Date: 29/01/29

DESCRIPTION
Typical VP and flush panel feature door
set

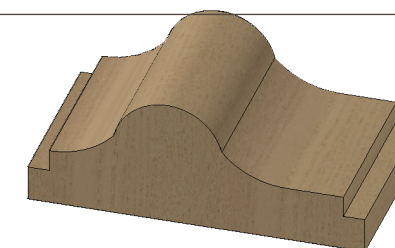
Sheet: 1 of 3
Scale: @ A3



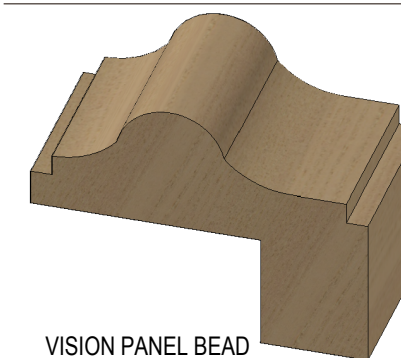
forza-doors.com
01403 711 126
sales@forza-doors.com



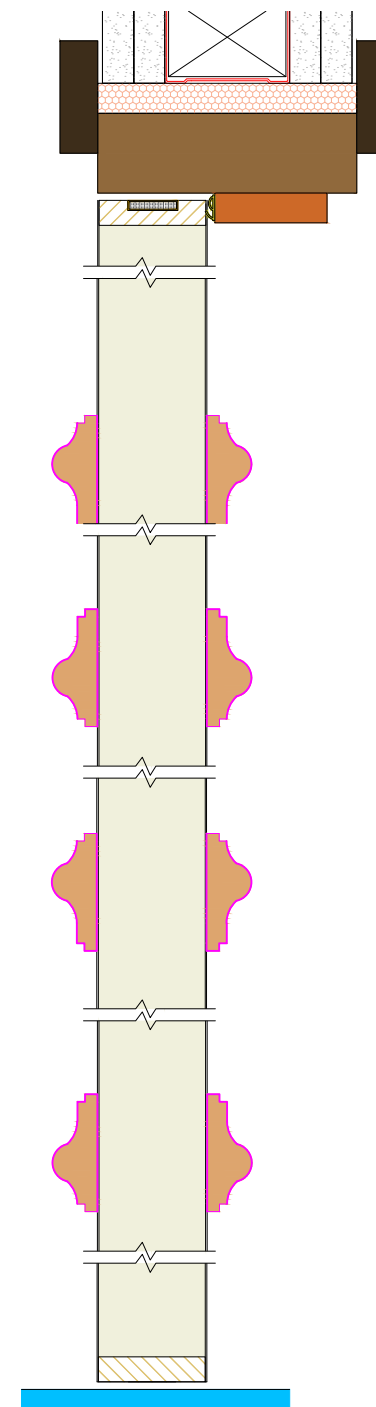
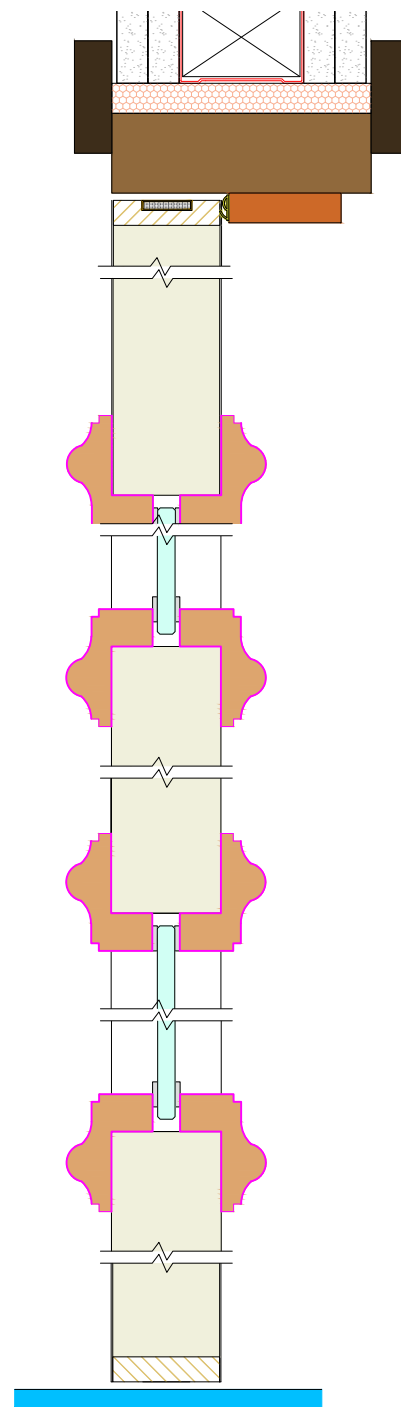
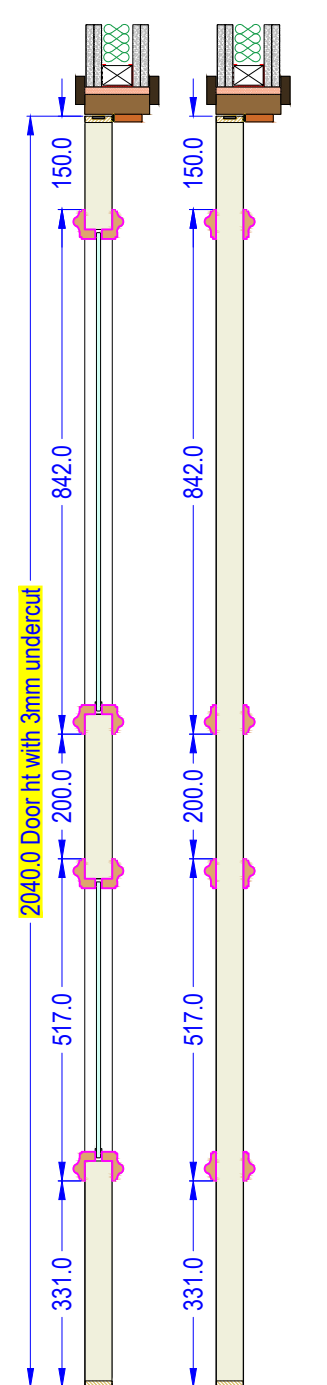
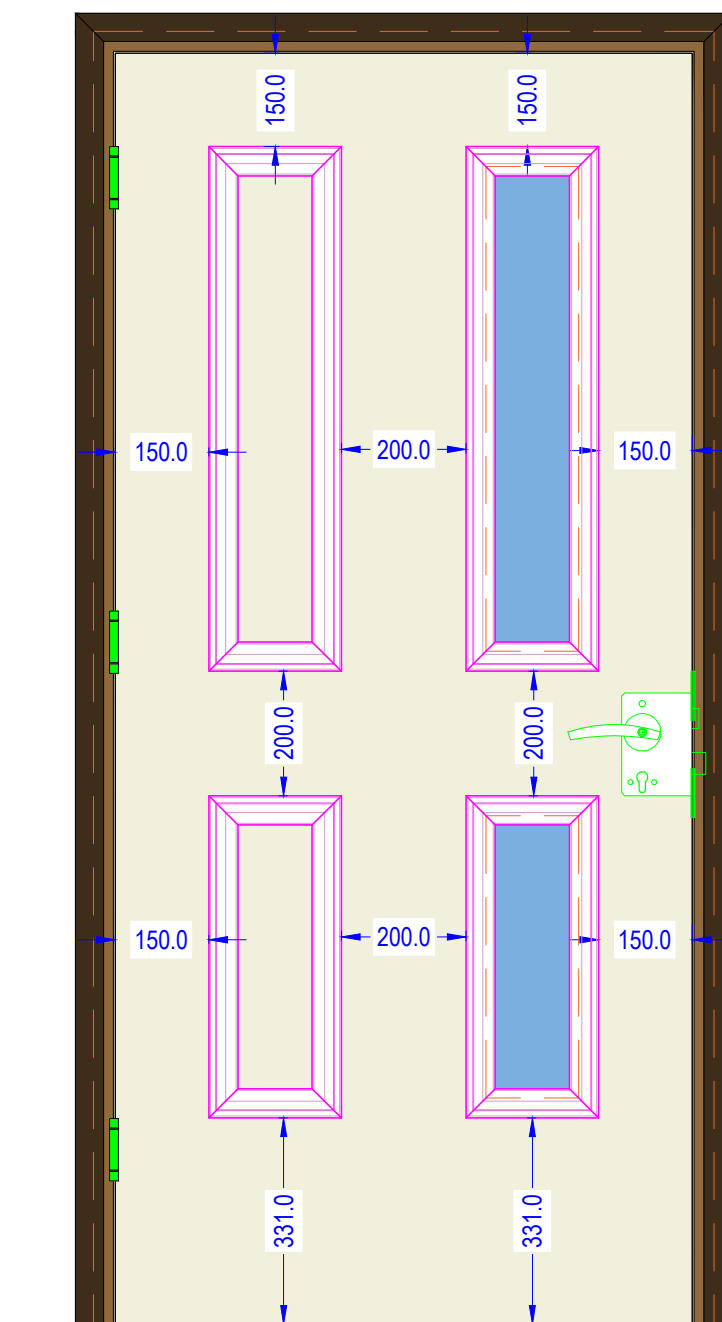
FLUSH BEAD



FLUSH BEAD



VISION PANEL BEAD



NOTE:

For fire rating purposes cut leaf aperture needs to be min. 150mm from door top and side edges.
All dimensions for indicative purposes and subject to change.

Factory Shop
Drawing

Project: Forza
Project Ref: Internal use
Drawn by: GP

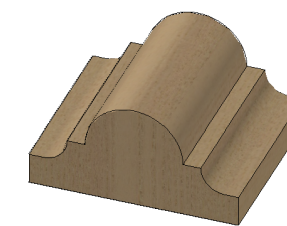
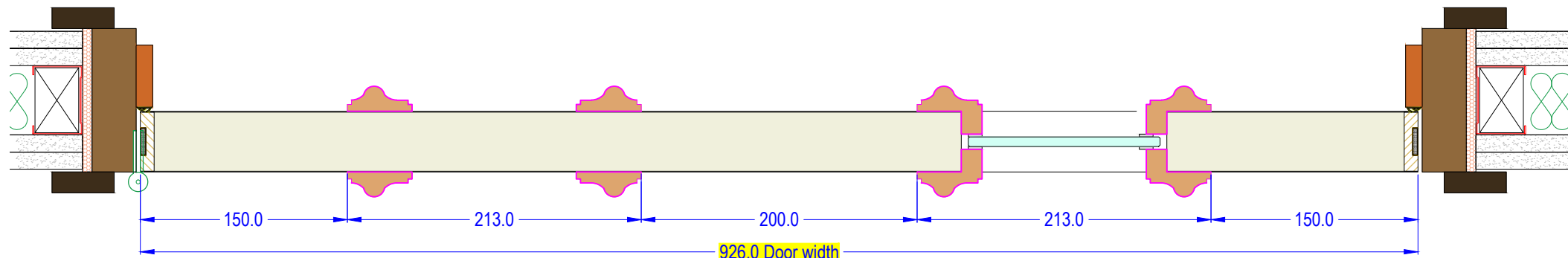
Drawing No: FZI00124
Revision No: 0
Date: 29/01/29

DESCRIPTION
Typical VP and flush panel feature door set

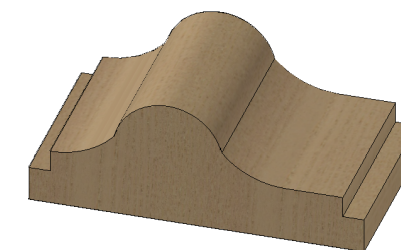
Sheet: 2 of 3
Scale: @ A3

FORZA
DOORS

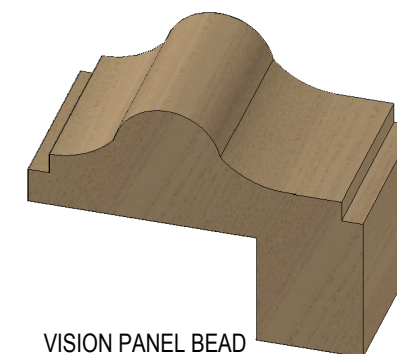
forza-doors.com
01403 711 126
sales@forza-doors.com



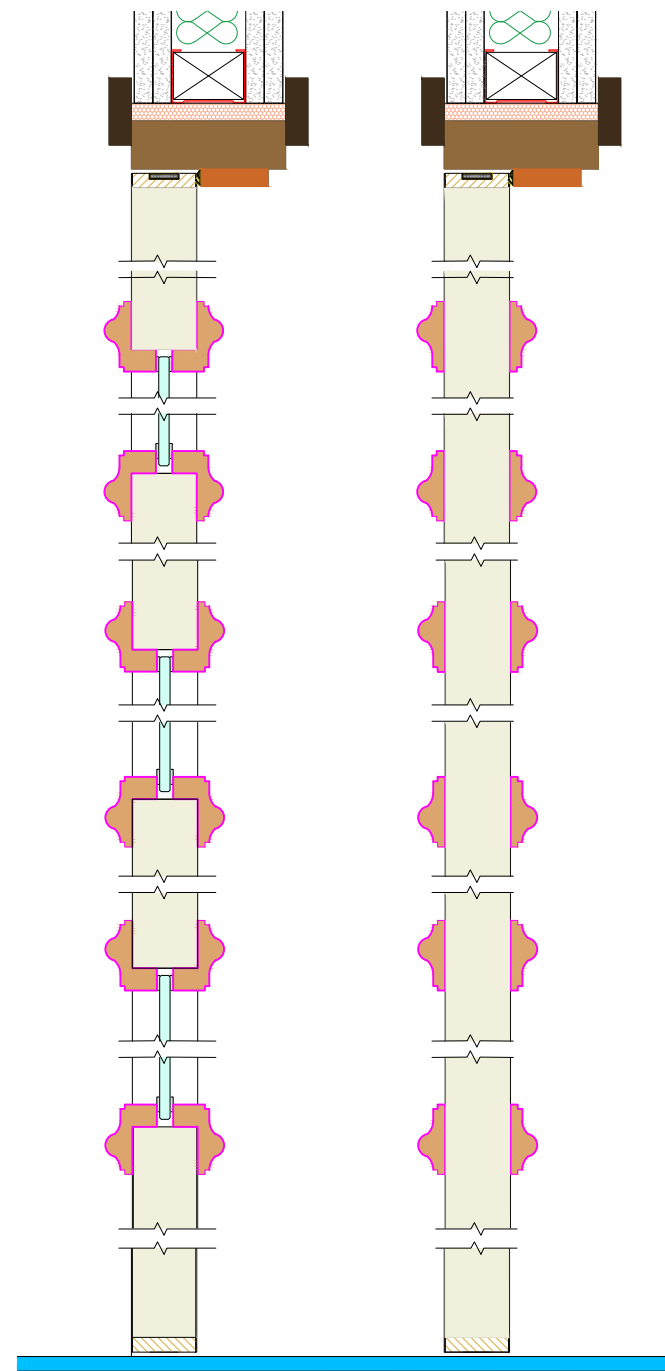
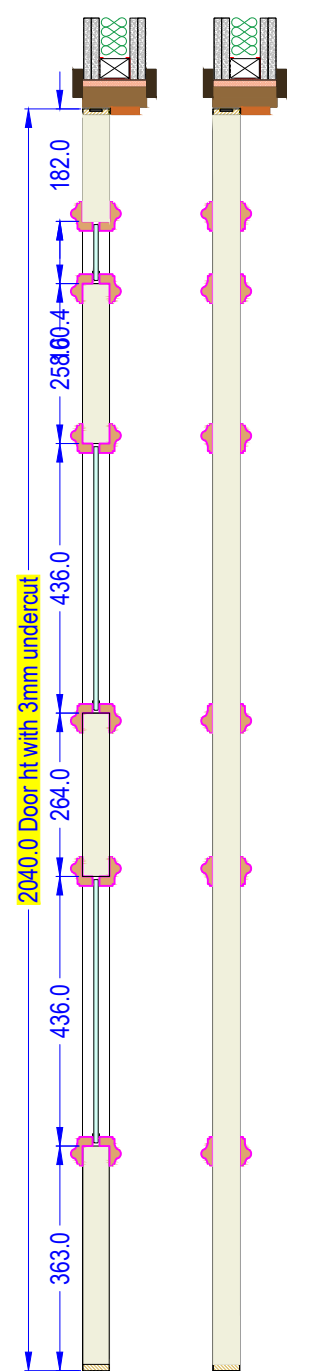
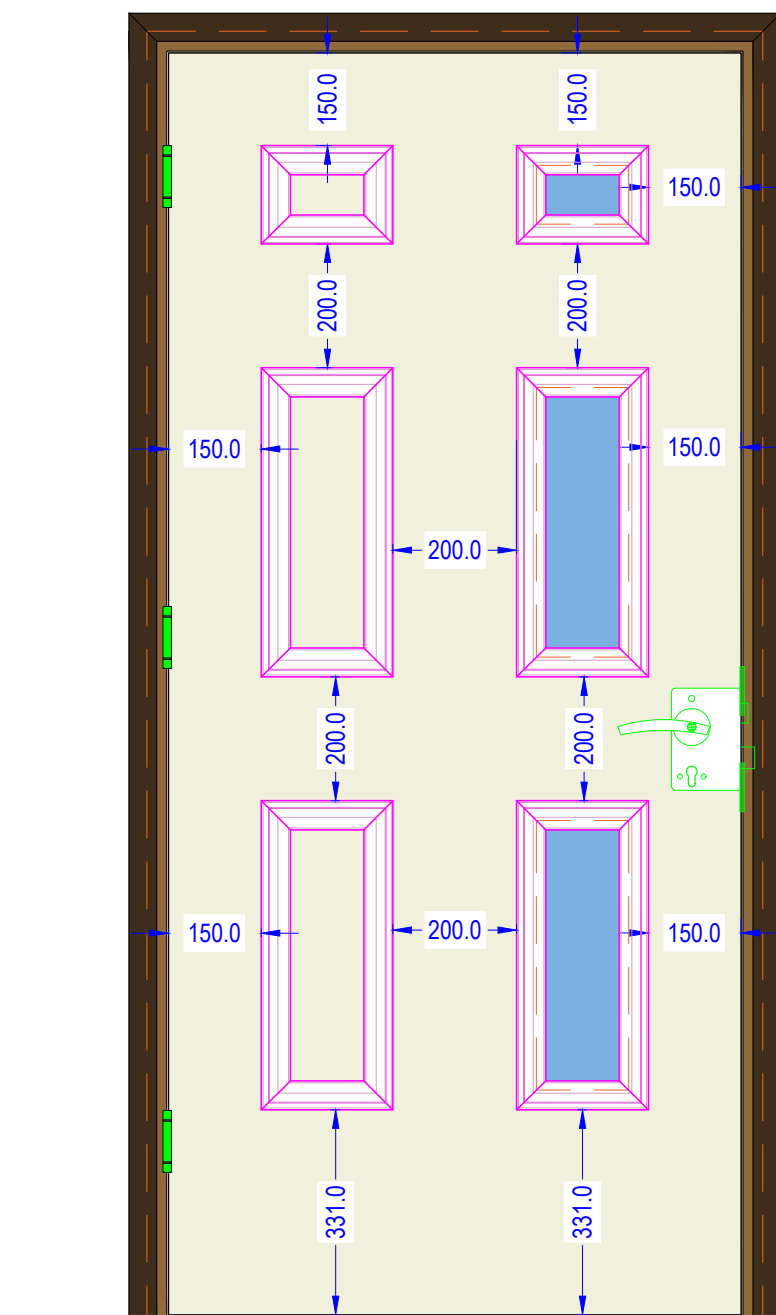
FLUSH BEAD



FLUSH BEAD



VISION PANEL BEAD



NOTE:

For fire rating purposes cut leaf aperture needs to be min. 150mm from door top and side edges.
All dimensions for indicative purposes and subject to change.

Factory Shop
Drawing

Project: Forza
Project Ref: Internal use
Drawn by: GP

Drawing No: FZI00124
Revision No: 0
Date: 29/01/29

DESCRIPTION
Typical VP and flush panel feature door set

Sheet: 3 of 3
Scale: @ A3



forza-doors.com
01403 711 126
sales@forza-doors.com