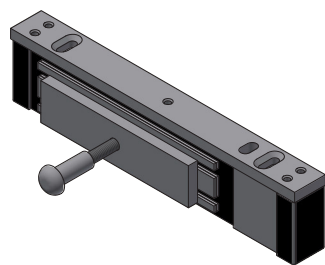


# BOLT THROUGH MAG LOCK - FD30

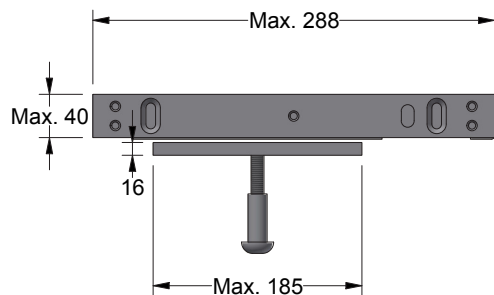
Isometric



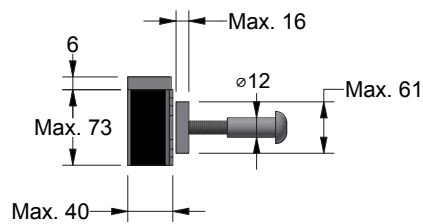
Perspective



Plan



Front



## Specification

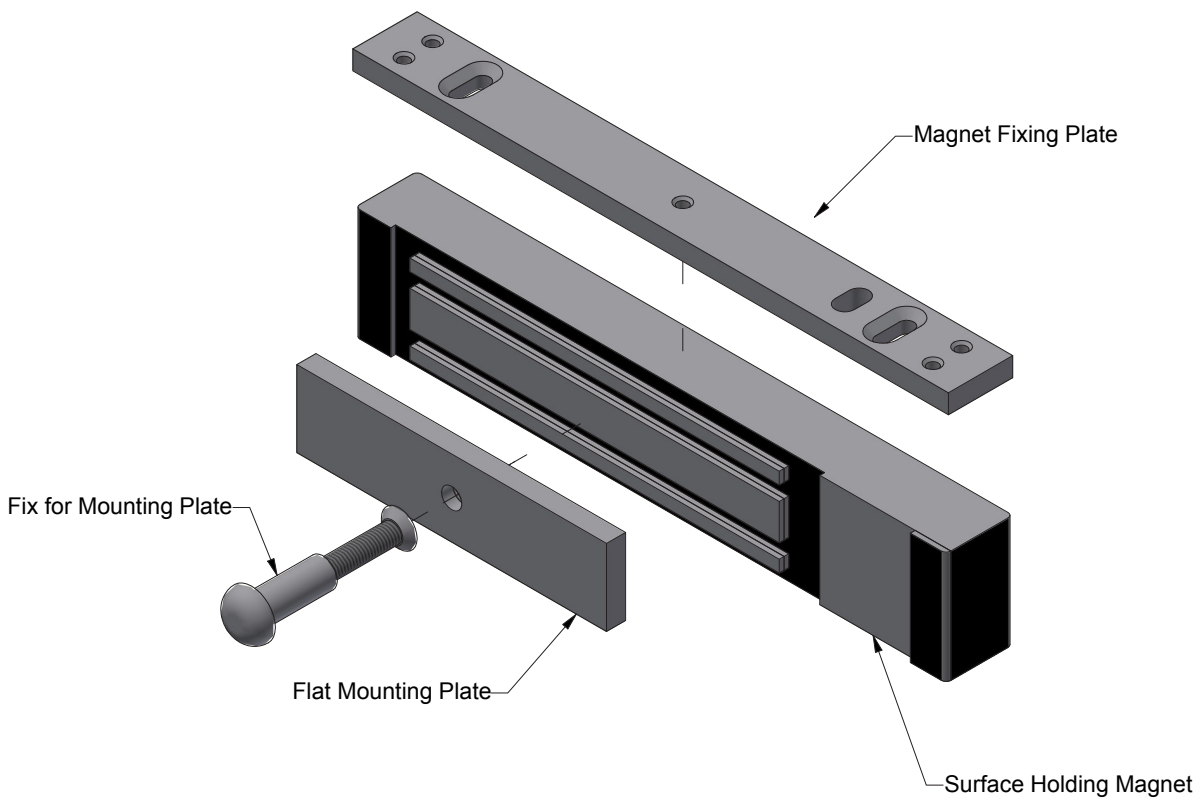
Door: Timber Particle Board 44 & 54mm

L & Z Brackets can be used  
Can be applied to either face  
Armature Plate to be positioned (min) 70mm from edge of leaf & (min) 10mm from head of leaf

|       |                              |        |            |
|-------|------------------------------|--------|------------|
| Title | Bolt Through Mag Lock - FD30 |        |            |
| Code  |                              |        |            |
| Sheet | 1 of 2                       | Date   | 11/01/2022 |
| Issue | 1                            | Dwg No | FZD5125    |

# BOLT THROUGH MAG LOCK - FD30

Exploded View



\*Lock Details For Illustrative Purpose Only.

## Specification

Door: Timber Particle Board 44 & 54mm

L & Z Brackets can be used  
Can be applied to either face  
Armature Plate to be positioned (min) 70mm from edge of leaf & (min) 10mm from head of leaf

|       |                              |        |            |
|-------|------------------------------|--------|------------|
| Title | Bolt Through Mag Lock - FD30 |        |            |
| Code  |                              |        |            |
| Sheet | 2 of 2                       | Date   | 11/01/2022 |
| Issue | 1                            | Dwg No | FZD5125    |



forza-doors.com  
01403 711 126  
sales@forza-doors.com